



“Logistics Solution”



[www.pls-logistics.com](http://www.pls-logistics.com)



# Table of Contents

1. About us
2. Shipping & Customs Clearance
3. Transportation Service
4. Warehouse Service
5. Trading Platform
6. Software Solutions
7. Supply Chain & Logistic



# About US

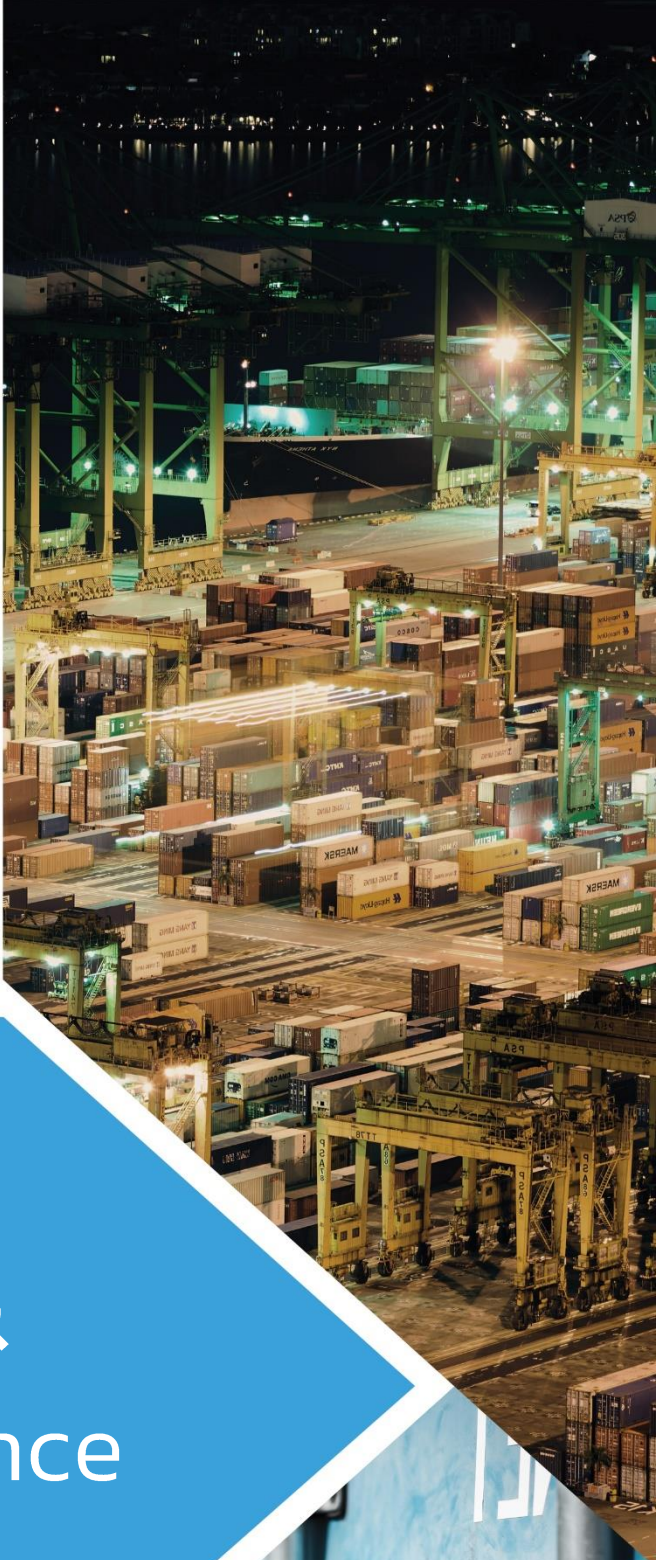
*Proud Logistic Service* established by the vision of management who is the expert in logistic business for 10 years. By the support of our team, we provided quality transportation and warehouse management for customers such as PTT Polymer Logistic, Schenker, KERRY, Indorama, Posco, BDP, SCL, etc.

*Proud Logistic Service* head office and warehouse are located in Rayong. We involved domestic transportation, importing, exporting and warehouse management. We focus on service quality (certified by ISO9001), safety, customer and other system. GPS, TMS, WMS are used to improve our service level and support our customers expectation.







# Shipping & Customs Clearance



# Shipping & Customs Clearance

*Proud Logistic Service* are one-stop freight forwarding services company for who require services like freight forwarding, customs clearance, transportation, door to door services, household effects, project shipments, exhibition clearance etc. With our partners in the South East Asia regions such as Singapore, Malaysia, Philippines, Vietnam and India. We is positioned to be a major player in the regional market and strives to provide our customers with excellent services.



- LCL consolidation – Providing worldwide import and export consolidation services
- Worldwide import and export of air cargo
- Packing and Packaging of general and hazardous Cargos / Personal Effects / Household Goods
- Marine Insurance
- Fumigation
- Customs Clearance
- Arranging and preparing of Certificate of Origin
- Handling of L/C shipments





# Shipping & Customs Clearance

## Service Import-Export

Full service package of Import-Export International transportation (cargo transportation by sea, air and courier), documentation service



Various type of cargo service

- Plastic Resin
- Garment, Fiber
- Food
- Rubber
- Steel Coil, Aluminum , Wire Mesh



- Container Trucking Service.
- Dry Container
- Reefer Genset
- Customs Formality and Clearance.





# T TRANSPORTATION SERVICE

Logistics is a matter of trust. We CARE about your cargo.  
We have specific logistics solution for customer.  
"One point logistics"  
We are Proud logistics.



# Transportation Services



## Scope of Services

- Customs Formality and Clearance.
- Cross Border Logistics
- Road Freight Forwarding Service.
- Container Trucking Service.
- Manpower Service.
- Inland Transport Service.

## Additional Services

- Cargoes Handling Project.
- Heavy-Lift Equipment.
- Warehouse Rent and Operation.

## Inland Transportation

- Stock Relocation
- Truck transfer

## Cross-Border Logistics (International Transportation)

- Cargo transport by sea (LCL / FCL, Bulk)
- Air cargo, courier cargo transportation
- Overseas moving cargo
- Documentation



## Project Transportation

- Various heavy object transportation and installation (Silo, Steel sheet, heavy machine, production line)
- Planning & Packing for heavy transportation
- Heavy-Lift Equipment.





# Transportation Services



## Truck Fleet

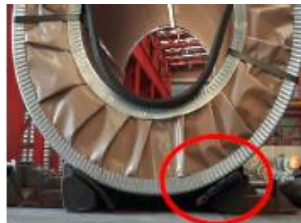
Various types of truck

- Haulage Trailer
- 10 Wheel Truck
- 6 Wheel Truck
- etc.



## Tools & Equipment

- Rubber Protector
- Edge Protection
- Tarpaulin
- Stopper
- Chains
- Tightener
- etc.



Rubber Protector



Tightener



Chains



Tarpaulin

## Personal Protective Equipment (PPE)

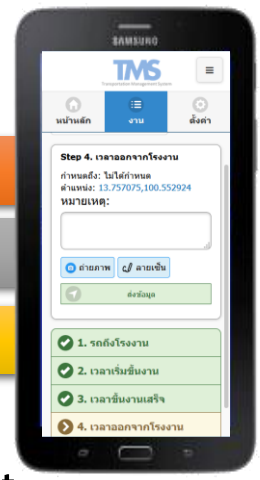
- Helmet
- Safety Shoes
- Safety Vest
- Safety Goggles
- etc.



# Transportation Services

## TMS: Transport Management System Integrated Transportation Service with Information Technology

Companies today are challenged to streamline their transportation and logistics management processes to maximize efficiencies, customer satisfaction and profit margins. TMS effectively manage the entire closed-loop transportation process from long-range strategies and operational planning to day-to-day execution.

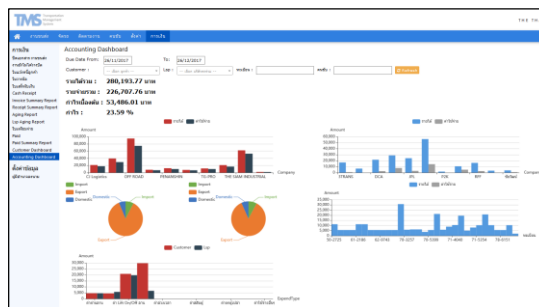


- Logistic Service Provider (LSP) Management
- Order Tracking & Global Visibility
- Truck Activity Management

### Real Time Job Tracking

### Dashboard for management

Job ID	Status	Location	Step 1	Step 2	Step 3	Step 4	Step 5
1000000001	Completed	Warehouse A	Success	Success	Success	Success	Success
1000000002	In Progress	Warehouse B	Success	Success	Success	Success	Success
1000000003	Delayed	Warehouse C	Success	Success	Success	Success	Success





# WAREHOUSE SERVICE

Warehouse Management and Inventory Control





# Warehouse Services



- New warehouse in the suitable location, access road is convenience for storage and handling of goods
- Availability of business office and facilities & public utility
- Designed and customized by professional in service warehouse
- Standard size with 18 x 42 m = 756 m<sup>2</sup> of utility space
- Foundation support max. load at 10 mt/m<sup>2</sup> and warehouse support max. load at 2 mt/m<sup>2</sup>
- Warehouse security service
- One Stop Service for warehousing & distribution
  - Inventory management and control
  - Order processing, inbound and outbound
  - Order fulfillment, pick and pack by order, SKU
  - Retail store distribution
  - Replenishment and fulfillment programs



# Warehouse Services



## Logistics Solution Design

- Consult & design in logistic of customer product and characteristic

## Warehouse Storage and Management

- Inventory management and control

## Cold Storage Warehouse

## Forklift and Manpower Service

## Cold Storage Warehouse





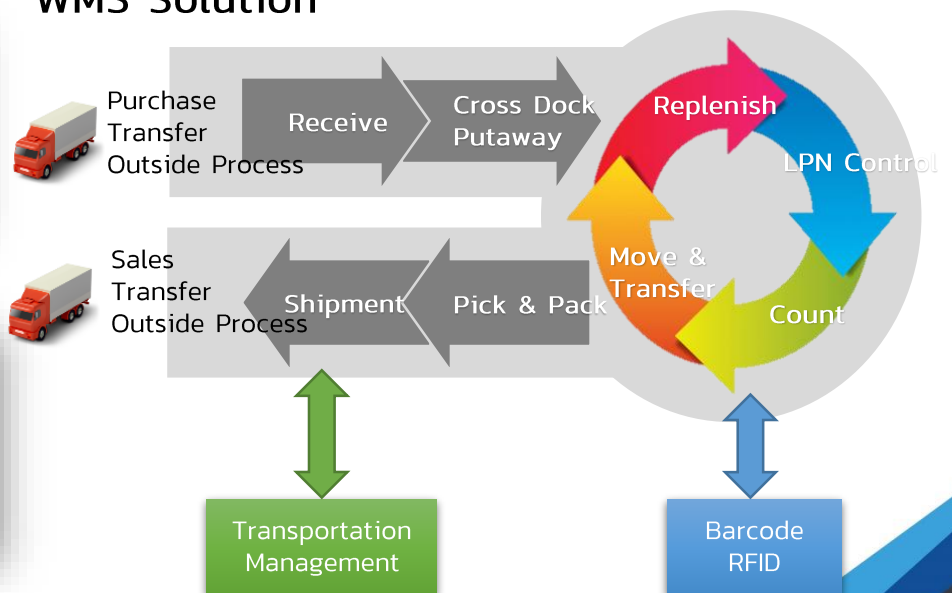
# Warehouse Services

## WMS: Warehouse Management System Integrated Warehouse Service with Information Technology

Accurate inventory underpins the rest of your business from making sure you can come through on promises to your custom to increase efficiency across your business. **WMS** is the tool that warehouse operators need to control their stock and maintain it at the optimum level.



### WMS Solution



ใบแสดงสถานะสินค้า			
รหัสสินค้า	Item No: P005-01 38500	สถานะ	Normal
ชื่อสินค้า	L-HISTIDINE JB 500KGS.	ลักษณะสินค้า	Normal
เลขที่ล็อต	Lot No: 150007		
Package	500	จำนวนกล่อง	0.00 KGS. พาเลทส์ B1
วันที่รับเข้า	Dec 28 2015	วันที่ผลิต	Dec 28 2015
วันที่รับออก		วันที่หมดอายุ	Dec 27 2016
เลข LPN			





# T RADING P LATFORM



# Trading Platform

B2B E-Commerce

Business Customer



Customer Service



B2B eCommerce



Logistic

Warehouse

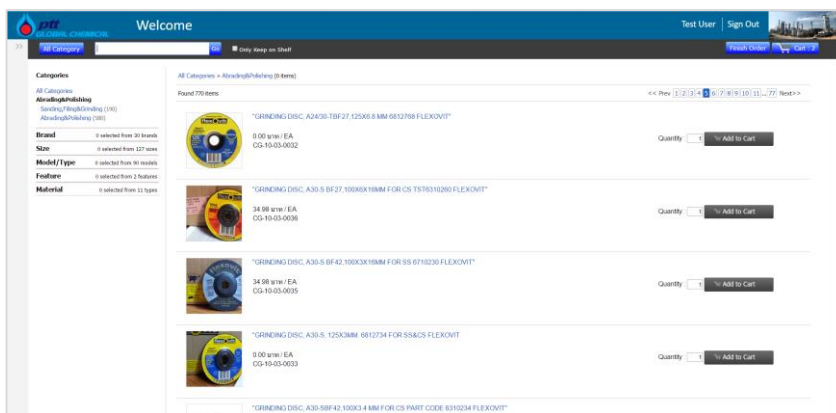
Supplier



# Trading Platform

B2B E-Commerce

- ❖ ระบบสั่งซื้อสินค้า E-Ordering
- ❖ สามารถทราบสถานะของ Order ได้ตลอดเวลา โดยมีการ update สถานะจากการทำงานแต่ละขั้นตอน Order Tracking
- ❖ มีระบบซื้อ, ระบบขาย, Inventory Control, Shipping, Invoice ซึ่งทั้งหมดเชื่อมต่อข้อมูลเป็นอันหนึ่งอันเดียวกัน
- ❖ รายงาน Daily Operation และ Management Report รวมถึง KPI ในการประเมินการสั่งซื้อสินค้า



The screenshot displays the 'Request Order Summary Report' page. It includes a header with the report title and user information. Below the header, there are filters for 'Request No.', 'Requester Name', 'Request Date From', 'Request Date To', and 'Dept./Div.'. A status bar shows 'Completed 34', 'Draft Requested', 'Ordering in Progress', 'New Request', and 'Cancelled 10'. The main part of the page is a table with columns for Request No., PO, Line No., Item Code, Item Name, Actual Cost, Profit Cost, Quantity, Profit Amount, Actual Amount, UOM, Request Type, Requester Name, Work Order/Code, Request Date, Plant, and Status.

Request No.	PO	Line No.	Item Code	Item Name	Actual Cost	Profit Cost	Quantity	Profit Amount	Actual Amount	UOM	Request Type	Requester Name	Work Order/Code	Request Date	Plant	Status
82202011		1	TERP000007	TA 10304 80mm	0.00	0.00	1	0.00	0.00	EA	SAKUNPORN SANGSRIK	00002811	2010-11-01	Bethany Plant	Draft Request	
82202011		2	TERP000008	TA 10304 80mm	0.00	0.00	2	0.00	0.00	EA	SAKUNPORN SANGSRIK	00002811	2010-11-01	Bethany Plant	Draft Request	
82202012		1	TERP000004	PT 10304 80mm	0.00	0.00	6	0.00	0.00	EA	SAKUNPORN SANGSRIK	00002811	2010-11-01	Bethany Plant	Draft Request	
82202011		1	TERP000008	TA 10304 80mm	0.00	0.00	4	0.00	0.00	EA	SAKUNPORN SANGSRIK	00002811	2010-11-01	Bethany Plant	Draft Request	
82202011		2	TERP000008	TA 10304 80mm	0.00	0.00	8	0.00	0.00	EA	SAKUNPORN SANGSRIK	00002811	2010-11-01	Bethany Plant	Draft Request	
82202011		1	TERP000001	TA 10304 80mm	0.00	0.00	1	0.00	0.00	EA	SAKUNPORN SANGSRIK	00002811	2010-11-01	Bethany Plant	Draft Request	
82202012		1	TERP000004	PT 10304 80mm	0.00	0.00	1	0.00	0.00	EA	SAKUNPORN SANGSRIK	00002811	2010-11-01	Bethany Plant	Draft Request	
82202012		2	TERP000004	PT 10304 80mm	0.00	0.00	1	0.00	0.00	EA	SAKUNPORN SANGSRIK	00002811	2010-11-01	Bethany Plant	Draft Request	
82202012		3	CC-10-01-008	TA 10304 80mm	0.00	0.00	24	0.00	0.00	EA	SAKUNPORN SANGSRIK	00002811	2010-11-01	Bethany Plant	Draft Request	
82202012		1	CC-10-01-008	TA 10304 80mm	0.00	0.00	4	0.00	0.00	EA	SAKUNPORN SANGSRIK	00002811	2010-11-01	Bethany Plant	Draft Request	

- > Foundation Data
- > Master Data
- > Request Order Entry
- > Request Order Entry Phenol
- > Request Order Summary Report
- > Order Processing
- > Shipping
- > Invoice
- > Purchase
- > Inventory Control
- > Management Report
- > Summary Report





# Software Solutions

## Core Competency

### Access Anywhere, Anytime

- PLS solution is a fully Web based solution. No effort, no time and therefore no cost needed for system installation and configuration on your PC's. A simple click via internet link and you will start browsing your stock.
- PLS Solution is completely compatible with all major browsers like IE 11 and above, Chrome, Firefox and Safari.



### Easy to Use

Its comprehensive and elegant Graphical User Interface (GUI) make it very easy to understand and use.



### High Reliability

- We connected with multiple-route multi-core optical fiber rings operated at multi-gigabit speed which is all automatic fault-tolerant. So internet connectivity is guaranteed at near-zero downtime. Advanced fire protection and suppression system is installed to protect servers and equipment in emergency case (FM200 system is installed).
- Our data center facilities are closely and actively monitored by the network and facility management system. our engineers have clear pictures of the data center status all the time and instantly notified if any anomaly is detected.



เพราะเราคือ “ ผู้นำที่ระบบ **SUPPLY CHAIN & LOGISTIC** ”



จากประสบการณ์ที่สั่งสมมาทำให้เราเข้าใจปัญหาต่าง ๆ  
ในวันนี้จึงทำให้เราพัฒนาระบบเข้ามาช่วยในการทำงาน  
และเพื่ออำนวยความสะดวกให้กับลูกค้า  
ที่จะสามารถติดตามสถานะสินค้าได้ตั้งแต่เริ่มสั่งจนจนถึงมือ





จากภาพด้านล่างนี้ คือชื่อระบบต่าง ๆ ที่เราพัฒนาเข้ามาใช้ในธุรกิจทั้งหมดในปัจจุบันที่อยู่ใน chain ของ Supply chain & Logistic

**TMS**  
Transport

**WMS**  
Warehouse

**ICS**  
Internal Control

**B2B**  
eCommerce

**PO**  
Acknowledge

**NEW**  
Technology

**Software Solutions..**





# รายละเอียดสินค้าเกี่ยวกับเหล็กต่าง ๆ ที่ทางเราจำหน่ายพร้อมบริการส่งถึงหน้าโครงการ มีดังนี้

ตารางแสดงน้ำหนัก เหล็กเส้นกลม (ROUND BAR)




ชั้นคุณภาพ	ขนาด (มม.)	น้ำหนัก (กก.)		
		1 ม.	10 ม.	12 ม.
เหล็กเส้นกลม ROUND BAR SR-24	6	0.222	2.22	2.664
	9	0.499	4.99	5.988
	12	0.888	8.88	10.656
	15	1.387	13.87	16.644
	19	2.226	22.26	26.712
25	3.853	38.53	46.236	

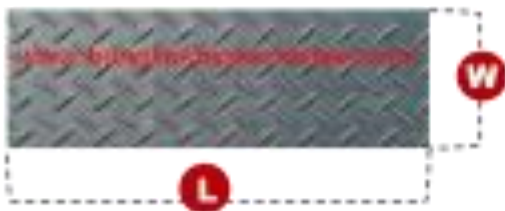
ตารางแสดงน้ำหนัก เหล็กข้ออ้อย (DEFORMED BAR)



ชั้นคุณภาพ	ขนาด (มม.)	น้ำหนัก (กก.)		
		1 ม.	10 ม.	12 ม.
เหล็กข้ออ้อย DEFORMED BAR SD-30	10	0.617	6.17	7.404
	12	0.888	8.88	10.656
	16	1.578	15.78	18.936
	20	2.466	24.66	29.326
	25	3.853	38.53	46.236
	28	4.834	48.34	58.008
	32	6.313	63.13	75.756
เหล็กข้ออ้อย DEFORMED BAR SD-40	10	0.617	6.17	7.404
	12	0.888	8.88	10.656
	16	1.578	15.78	18.936
	20	2.466	24.66	29.592
	25	3.853	38.53	46.236
	28	4.834	48.34	58.008
	32	6.313	63.13	75.756
เหล็กข้ออ้อย DEFORMED BAR SD-50	12	0.888	8.88	10.656
	16	1.578	15.78	18.936
	20	2.466	24.66	29.592
	25	3.853	38.53	46.236
	28	4.834	48.34	58.008



Thickness mm	Width x Length Weight of One Plate (Kg)		
	4'x8' (1,219x2,438)	5'x10' (1,524x3,048)	5'x20' (1,524x6,096)
1.7	28.0	-	-
1.5	35.0	-	-
2.0	46.7	-	-
2.3	53.7	-	-
2.5	58.3	-	-
3.0	70.0	109.4	218.7
3.2	74.7	117.0	234.0
4.0	93.3	146.0	292.0
4.5	105.0	164.0	328.0
5.0	117.0	182.3	365.0
6.0	140.0	219.0	438.0
8.0	187.0	292.0	583.0
9.0	210.0	328.0	656.0
10.0	233.3	365.0	729.0
12.0	280.0	438.0	875.0
15.0	350.0	547.0	1,094.0
16.0	373.0	584.0	1,167.0
19.0	444.0	693.0	1,386.0
20.0	467.0	729.0	1,459.0
22.0	513.0	802.0	1,604.0
25.0	583.0	912.0	1,823.0
28.0	653.0	1,021.0	2,042.0
30.0	700.0	1,094.0	2,188.0
32.0	747.0	1,167.0	2,334.0
38.0	887.0	1,385.0	2,771.0



## CHECKERED PLATES

### เหล็กแผ่นกันลื่น

Grade 55400

Thickness mm	Width x Length Weight of One Plate (Kg)	
	4'x8' (1,219x2,438)	5'x10' (1,524x3,048)
2.3	52	
3.2	75	125
4.5	110	173
6.0	145	227
9.0	215	337

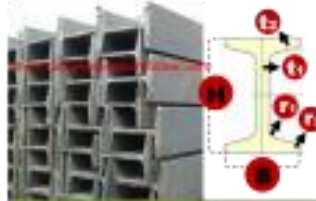




### WIDE FLANGE เหล็กว้างแฟรงค์

Quality JIS G 3192:1996  
JIS G 3101:1995  
TIS 1227:1996  
Grade SS-400, SS-540

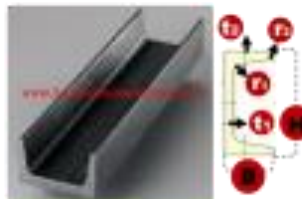
Sectional Dimension (mm)					Weight		Sectional Area
Nominal Size	H x B	t1	t2	r	kg/m	kg/6m	cm <sup>2</sup>
100 x 50	100 x 50	5.0	7	8	9.3	55.80	11.85
150 x 75	150 x 75	5.0	7	8	14.0	84.00	17.85
150 x 100	148 x 100	6.0	9	11	21.1	126.60	26.84
200 x 100	200 x 100	5.5	8	11	21.3	127.80	27.16
200 x 150	194 x 150	6.0	9	13	30.6	183.60	39.01
250 x 125	250 x 125	6.0	9	12	29.8	177.60	37.66
250 x 175	244 x 175	7.0	11	16	44.1	264.60	56.24
300 x 150	300 x 150	6.5	9	13	36.7	220.20	46.78
300 x 200	294 x 200	8.0	12	18	56.8	340.80	72.38
350 x 175	350 x 175	7.0	11	14	49.6	297.60	63.14
350 x 250	340 x 250	9.0	14	20	79.7	478.20	101.50
400 x 200	400 x 200	8.0	13	16	66.0	396.00	84.12
400 x 300	390 x 300	10.0	16	22	107.0	642.00	136.09
450 x 200	450 x 200	9.0	14	18	76.0	456.00	96.76
450 x 300	440 x 300	11.0	18	24	124.0	744.00	157.40
500 x 200	500 x 200	10.0	16	20	89.6	537.60	114.20
500 x 300	488 x 300	11.0	18	26	138.0	768.00	162.56
600 x 300	600 x 300	11.0	17	23	186.0	1116.00	234.40
600 x 300	588 x 300	12.0	20	28	151.0	906.00	192.50
600 x 300	594 x 302	14.0	23	28	175.0	1050.00	222.40
700 x 300	700 x 300	13.0	24	28	185.0	1110.00	235.50
800 x 300	800 x 300	14.0	26	28	210.0	1260.00	267.40
900 x 300	900 x 300	16.0	28	28	243.0	1458.00	309.80



### I-BEAM เหล็กไอบีเอ็ม

Quality JIS G 3192:1996  
JIS G 3101:1995  
TIS 1227:1996  
Grade SS-400, SS-540

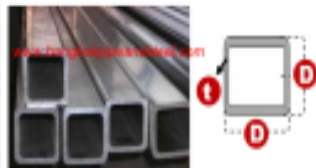
Sectional Dimension (mm)					Weight		Sectional Area
H x B	t1	t2	r1	r2	kg/m	kg/6m	cm <sup>2</sup>
150 x 75	5.5	9.5	9	4.5	17.1	102.60	21.83
200 x 100	7.0	10.0	10	5.0	26.0	156.00	33.06
200 x 150	9.0	16.0	15	7.5	50.4	302.40	64.16
250 x 125	7.5	12.5	12	6.0	38.3	229.80	48.79
300 x 150	10.0	19.0	21	10.5	55.5	333.00	70.73
	8.0	13.0	12	6.0	48.3	289.80	61.58
	10.0	18.5	19	9.5	65.5	393.00	83.47
350 x 150	11.5	22.0	23	11.5	76.8	460.80	97.88
	9.0	15.0	13	6.5	58.5	351.00	74.58
	12.0	24.0	25	12.5	87.2	523.20	111.10
400 x 150	10.0	18.0	17	8.5	72.0	432.00	91.73
	12.5	25.0	27	13.5	95.8	574.80	122.10
400 x 190	11.0	20.0	19	9.5	91.7	550.20	116.80
	13.0	26.0	27	13.5	115.0	690.00	146.10
600 x 190	13.0	25.0	25	12.5	135.0	798.00	169.40
	16.0	35.0	38	19.0	176.0	1,056.00	224.50



### CHANNELS เหล็กตัวซี-ชาแนล

Quality JIS G 3192:1996  
JIS G 3101:1995  
TIS 1227:1996  
Grade SS-400, SS-540

Sectional Dimension (mm)					Weight		Sectional Area
H x B	t1	t2	r1	r2	kg/m	kg/6m	cm <sup>2</sup>
90 x 25	5.0	6.0	6	3.0	3.90	23.16	4.92
75 x 40	5.0	7.0	8	4.0	6.90	41.50	8.83
100 x 50	5.0	7.5	8	4.0	9.40	56.20	11.92
125 x 65	6.0	8.0	8	4.0	13.40	80.40	17.11
150 x 75	6.5	10.0	10	5.0	18.40	111.60	23.71
	9.0	12.5	15	7.5	24.00	144.00	30.59
180 x 75	7.0	10.5	11	5.5	21.40	128.40	27.2
200 x 80	7.5	11.0	12	6.0	24.60	147.60	31.33
200 x 90	8.0	13.5	14	7.0	30.30	181.80	38.65
250 x 90	9.0	13.0	14	7.0	34.60	207.60	44.07
300 x 90	11.0	14.5	17	8.5	40.20	241.20	51.17
	9.0	13.0	14	7.0	38.10	228.60	48.57
300 x 100	10.0	15.5	19	9.5	43.80	262.80	55.74
	12.0	16.0	19	9.5	48.80	291.60	61.9
300 x 100	10.5	16.0	18	9.0	54.50	327.00	69.39
	13.0	16.5	18	9.0	62.00	372.00	78.96
	13.0	20.0	24	12.0	67.30	403.80	85.71



### SQUARE TUBE เหล็กป็นเหลี่ยม

QUALITY TIS 107 : 1990

Size D x D	Thickness t(mm)	Weight		Sectional Area cm <sup>2</sup>
		Kg/m	Kg/6m	
25 x 25	2.3	1.53	9.18	1.950
	3.2	1.93	11.88	2.526
32x32	2.3	2.04	12.24	2.595
	3.2	2.69	16.14	3.422
38x38	2.3	2.47	14.82	3.147
	3.2	3.29	19.74	4.190
50x50	2.3	3.34	20.04	4.521
	3.2	4.50	27.00	5.726
60x60	2.3	4.06	24.36	5.171
	3.2	5.50	33.00	7.006
75x75	2.3	5.14	30.84	6.551
	3.2	7.01	42.06	8.926
90x90	4.5	9.55	57.30	12.160
	3.2	8.51	51.06	10.840
100x100	4.5	11.67	70.02	14.860
	2.3	6.95	41.70	8.851
150x150	3.2	9.52	57.12	12.130
	4.5	13.09	78.54	16.660
	6.0	14.54	87.24	18.520
	4.5	20.15	120.90	25.660
	6.0	26.40	158.40	33.670







### RECTANGULAR TUBE เหล็กกล่อง

QUALITY TIS 107 : 1990

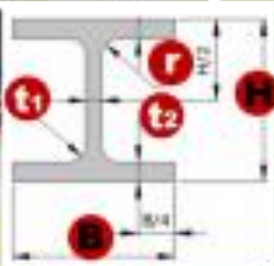
Size D x D	Thickness t(mm)	Weight		Sectional Area cm <sup>2</sup>
		Kg/m	Kg/6m	
50x25	2.3	2.44	14.64	3.101
	3.2	3.24	19.44	4.126
60x30	2.3	2.98	17.88	3.791
	3.2	3.99	23.94	5.086
75x38	2.3	3.81	22.86	4.850
	3.2	5.15	30.90	6.558
75x45	2.3	4.06	24.36	5.171
	3.2	5.50	33.00	7.006
100x50	2.3	5.14	30.84	6.551
	3.2	7.01	42.06	8.926
125x75	4.5	9.55	57.30	12.160
	2.3	6.95	41.70	8.851
150x75	3.2	9.52	57.12	12.120
	4.5	13.09	78.54	16.660
150x100	2.3	7.85	47.10	10.000
	3.2	10.78	64.68	13.720
150x100	4.5	14.85	89.10	18.910
	3.2	12.03	72.18	15.320
150x100	4.5	16.62	99.72	21.160
	6.0	21.70	130.20	27.620



### PIPE เหล็กท่อน้ำ

QUALITY TIS 107 : 1990

Nominal Dimension (mm)	Outside Diameter D(mm)	Thickness t(mm)	Weight		Sectional Area cm <sup>2</sup>
			Kg/m	Kg/6m	
15	21.4	2.3	1.08	6.48	1.380
20	27.2	2.3	1.40	8.40	1.780
25	33.8	2.3	1.81	10.86	2.300
32	42.4	2.3	2.28	13.68	2.900
40	48.6	2.3	2.62	15.72	3.330
		3.2	3.57	21.42	4.540
50	60.3	3.2	4.51	27.06	5.740
		4.5	6.19	37.14	7.890
65	76.3	3.2	5.76	34.56	7.340
		4.5	7.96	47.76	10.140
80	89.1	3.2	6.76	40.56	8.620
		4.5	9.37	56.22	11.930
90	101.6	3.2	7.77	46.62	9.890
		4.5	10.78	64.68	13.730
100	114.3	3.2	8.77	52.62	11.170
		4.5	12.18	73.14	15.520
125	139.5	4.5	14.98	89.88	19.090
		6.0	16.02	96.12	20.400
150	165.2	4.5	14.98	89.88	19.090
		6.0	19.75	118.50	25.160
150	165.2	4.5	17.86	107.16	22.750
		6.0	23.57	141.42	30.030



### H - Beam

เหล็ก H-Beam

Quality JIS G 3192:1990  
JIS G 3101:1995  
TIS 1227:1996  
Grade SS-400, SS-540

Sectional Dimension (mm)					Weight		Sectional Area cm <sup>2</sup>
Nominal Size	HxB	t1	t2	r	kg/m	kg/6m	
100 x 100	100 x 100	6.0	8	10	17.2	103.20	21.90
125 x 125	125 x 125	6.5	9	10	23.8	142.80	30.31
150 x 150	150 x 150	7.0	10	11	31.5	189.00	40.14
175 x 175	175 x 175	7.5	11	12	40.2	241.20	51.21
200 x 200	200 x 200	8.0	12	13	49.9	299.40	63.53
250 x 250	250 x 250	9.0	14	16	72.4	434.40	92.18
300 x 300	300 x 300	10.0	15	18	94.0	564.00	119.80
350 x 350	350 x 350	12.0	19	20	137.0	822.00	173.90
400 x 400	400 x 400	13.0	21	22	172.0	1032.00	218.70

